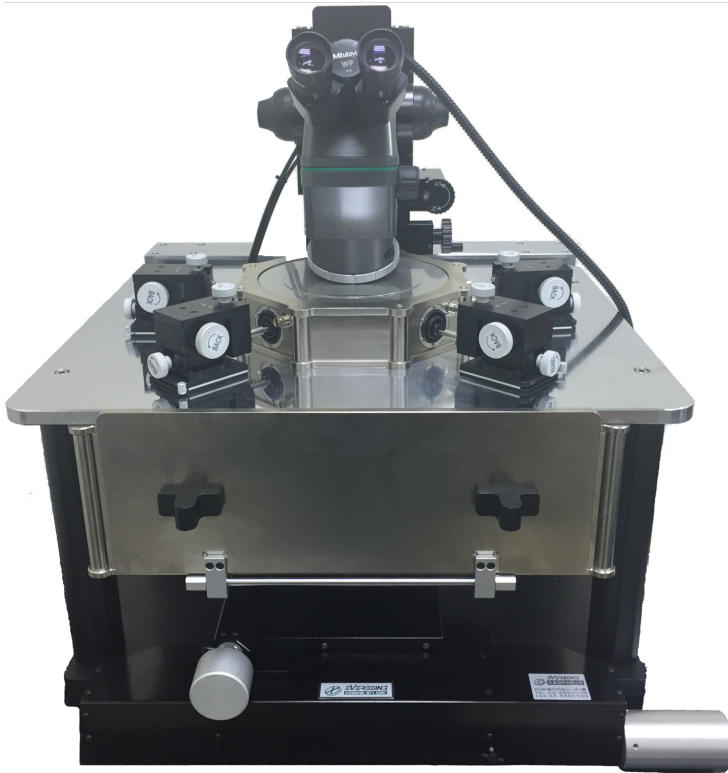


Your Partner in Probing Solutions



EB Chamber Plus Probe Station

Take your DC and RF further with
temperature control

The EB Chamber Plus Stations combines our flagship probe station with an embedded chamber enclosure for oxygen free environments for probing.

Features

- Highly Stable Large Knob Precision Stage
- Back-lash free movement
- Mounting for 8 micropositioners
- Micropositioner Standby Dock

Applications

- Basic IV/CV
- RF, Single Broadband Probing
- High Voltage, High Current

Accessories

- Hot Chuck with Temperature Controller
- Vibration Free Table
- Shielding Box

EB CHAMBER PLUS PROBE STATION

Your Partner in Probing Solutions

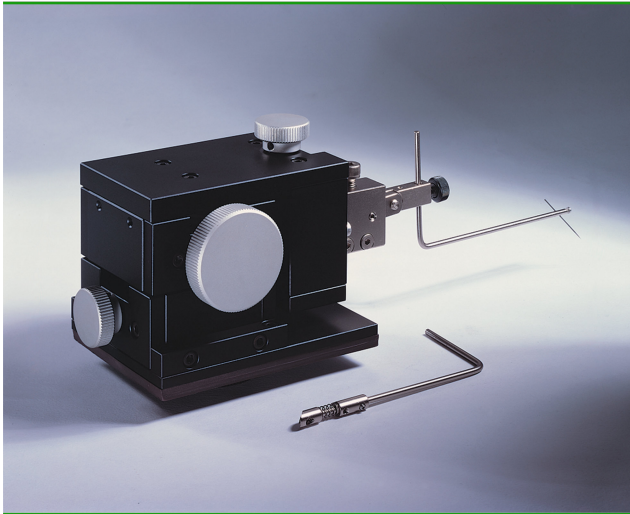
Station Specifications

Station Footprint	760 mm W x 660mm D
Station Height	450 mm (to Platen)/700 mm (to Microscope)
Station Weight	80kg
Platen Material	Hard Chrome Plated Steel
Platen Dimension	250 mm Inner, 450mm Outer
Platen Capacity	8 DC or 4 RF 4 DC
Positioner Mount	Magnetic ON/OFF Switch
No. of Vacuum Switches	4
Platen Z-Motion Range	6 mm Pneumatic
Platen Z-Fine Resolution	1 μ m
Platen Z Movement	Gear and Belt (Fine), Lever (Coarse)
Chuck Material	Stainless Steel
Chuck Stage Type	Large Knob Precision Movement
Chuck Travel Range	6" x 6"
Chuck Quick Movement	Quick Y Rail Movement for Easy Sample Loading
Chuck Fine Resolution	1 μ m
Chuck Theta Coarse Travel	20°
Chuck Theta Fine Resolution	0.01°
Large Knob Chuck Movement	High Precision Linear Stage
Chuck Size	6" (150 mm)
Chuck Planarity	3 μ m
Chuck Rigidity	15 μ m / 10 N @ edge
Chuck Vacuum Grooves	Center, 0.5", 1.5", 2.5" (Individually Controlled)
Chuck Bias Capacity	Up to 2 kV
Chuck Isolation	5 G Ω
DUT Size Range	2 mm - 150 mm
Microscope Stage Type	High Precision Linear Stage
Microscope Stage Resolution	1 μ m
Microscope Stage Travel Range	2" x 2"
Microscope Tilting (Optional)	35°

EB CHAMBER PLUS PROBE STATION

Micropositioner

All micropositioners offer X-Y-Z linear-motion travel with no backlash with mounting options including magnet, vacuum or magnet switch



EB-005

Resolution: 0.3 μm

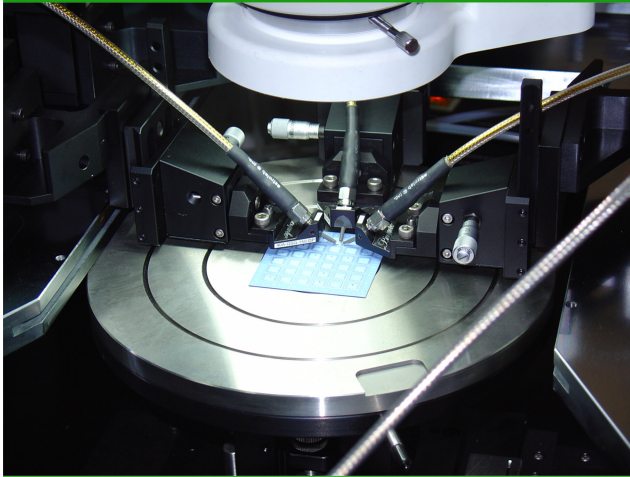
Screw Resolution: 125 μm

Travel Range: Linear 12 mm X-Y-Z

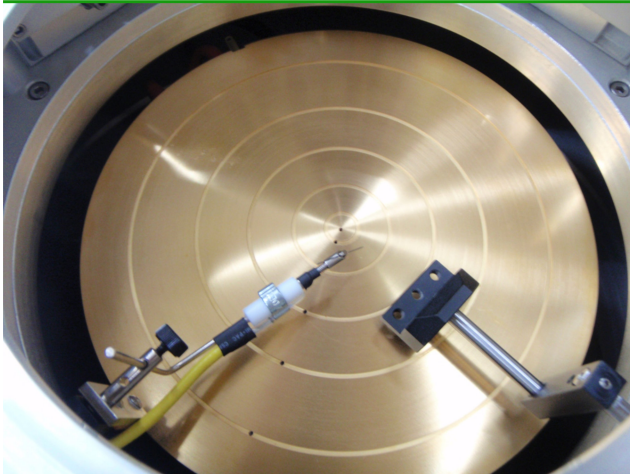
Dimensions: 90 mm W x 130 mm D x 90 mm H

Weight: 1000 g

Used For: DC/RF Capable



The EB-005 is a DC and RF compatible station. RF is capable up to 67 GHz



DC Tip Holder Options

Triaxial: 1.5 kV/1A, 80fA Leakage

Kelvin: 250V/3A, 10 fA Leakage

EB CHAMBER PLUS PROBE STATION

Hot Chuck Options



HT-x00-6

Chuck Size: 6"

Temperature Range: RT~x00. Where x can be temperature ceiling of 2, 3, 4, 5

Power Output: Internal DC Output

Power Input: 110V/220V (200 °C version), 220V for 300 °C and higher

Temperature Resolution: 0.1 °C

Cold Chuck Options

Everbeing provides a cold chuck solution by using manual low flow rate of liquid nitrogen to achieve temperatures below 0 °C. Our controllers can sense and heat up the chuck for temperature stability. Only LN2 is manually controlled.

For full digitally controlled chucks, we can install thermal chucks from various suppliers such as InTest Thermal, ERS. Please contact us for more details on these version

EB CHAMBER PLUS PROBE STATION

Vibration Free Table Option



VFT-3636

Dimension: 36" W x 36" D x 36" H

Vertical Natural Frequency: 1.5 Hz

Isolation Efficiency: @ 5 Hz 85%

Horizontal Natural Frequency: 1.2 Hz

Isolation Efficiency: @ 5 Hz 91%

Air Requirement: 80 psi

Net Load: 200 kg

Material: Stainless Steel TableTop